

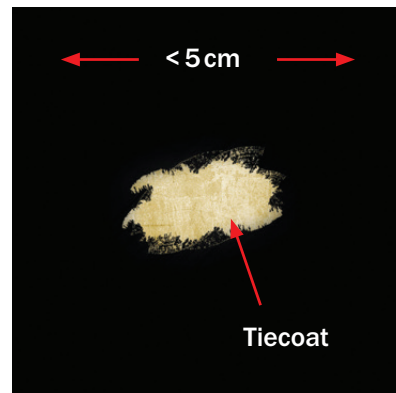
Silic One damage repair procedure

1. Light damage below 5x5 cm



Damage description:

Hempel's Silic One is damaged and Silic One Tiecoat (yellow coat) is visible. Hempel's Silic One Tiecoat may also be slightly damaged, but you cannot see through it.



Reparation procedure:

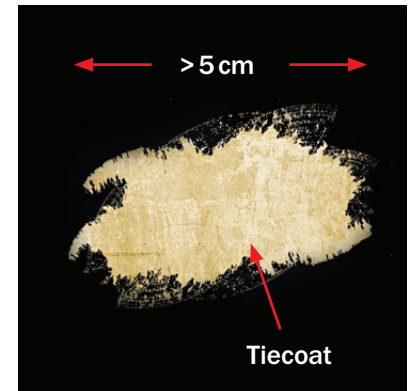
Put 1 layer of Hempel's Silic One on the damage (and complete underwater boat surface when re-painting).



2. Light damage above 5x5 cm

Damage description:

Hempel's Silic One is damaged on a larger area than 5 cm and Silic One Tiecoat (yellow coat) is visible. The tiecoat may also be slightly damaged, but you cannot see through it.



Reparation procedure:

Carefully remove all loose coating.



Clean the damaged area with boat shampoo.



Rinse with clean water and let dry.



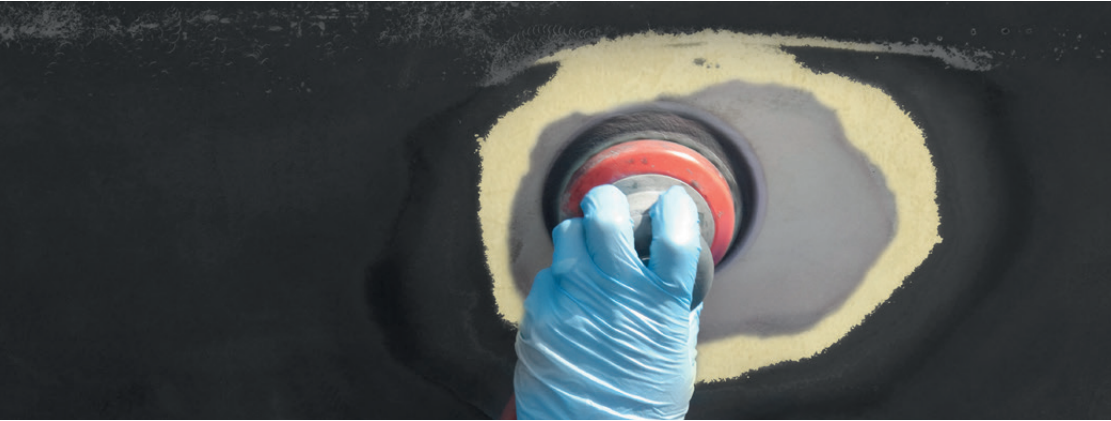
Put on the clean and dry damaged area 1 layer of yellow Hempel's Silic One Tiecoat on a slightly larger area than the damaged area.



Put 1 layer of Hempel's Silic One on the damaged area slightly larger than the area with Hempel's Silic One Tiecoat (Apply one coat of Silic One to the entire underwater surface.)

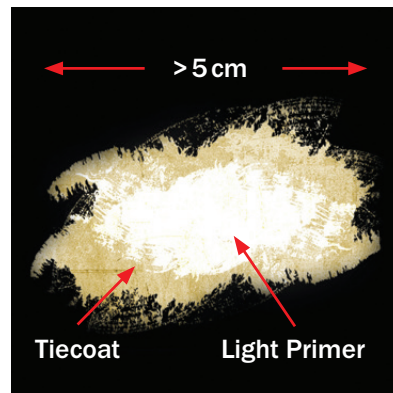


3. Medium & heavy damage above 5x5 cm



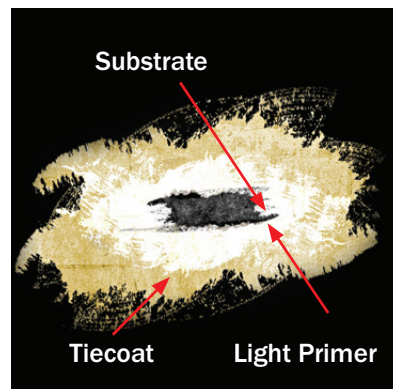
Medium damage description:

Hempel's Silic One is completely gone, the Hempel's Silic One Tiecoat (yellow coat) is damaged and the white epoxy primer (Hempel's Light Primer) is visible. The epoxy primer might also be slightly damaged but you cannot see through it.



Heavy damage description:

You can see all the way through the coating system to the substrate underneath.



Reparation procedure:

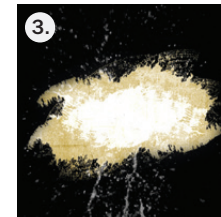
Carefully remove all loose coating.



Clean the damaged area with boat shampoo.



Rinse with clean water and let it dry.



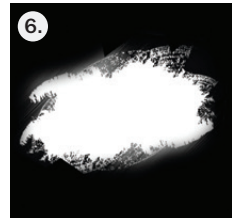
Sand the damaged area with the sand paper and remove any remaining dust with a cloth.



Apply 1 layer of Hempel's Light Primer* (check Key advice!) on the damaged area on a slightly larger surface than the damaged area.



After drying, the paint that has been applied next to the repair area and upon needs to be loosened and cut off.



When the surface is dry, apply 1 layer of Hempel's Silic One Tiecoat (yellow coat) on a slightly larger area than the applied primer area.



Apply 1 layer of Hempel's Silic One on the slightly larger area than the damaged area which you have already applied with yellow Silic One Tiecoat (apply one coat of Silic One to the entire underwater surface).



Key Advice

* In case heavy damage above 5x5 cm apply 5 layers of Hempel's Light Primer.

This image shows a single sheet of white paper with horizontal ruling lines. The lines are evenly spaced and run across the width of the page. There are no margins, text, or other markings on the paper.[illegible]

Hempel's Silic One

Our most efficient antifouling solution

As a world-leading supplier of trusted coating solutions, Hempel is a global company with strong values, working with customers in the protective, marine, decorative, container and yacht industries. Hempel factories, R&D centres and stock points are established in every region. Across the globe, Hempel's coatings protect surfaces, structures and equipment. They extend asset lifetimes, reduce maintenance costs and make homes and workplaces safer and more colourful. Hempel was founded in Copenhagen, Denmark in 1915. It is proudly owned by the Hempel Foundation, which ensures a solid economic base for the Hempel Group and supports cultural, social, humanitarian and scientific purposes around the world.

Hempel A/S

Lundtoftegårdsvej 91
2800 Kgs. Lyngby
Denmark
Europe
E-mail: ccoyacht@hempel.com
hempel.com

**For North American Customers
please contact:
SeaWide Marine Distribution
1-866-732-9433
Sales@seawide.com**